



Name: ..... Class : 9<sup>th</sup> B..... N°: .....

Mark:

...../20

**I. Listening comprehension : (...../8 marks)**

**1) Listen to the passage and tick (✓) the right alternative: (1 mark)**

- The listening passage is about: The causes of water pollution. ☐
- The causes and effects of water pollution. ☐
- The effects of water pollution. ☐

**2) Listen to the passage and answer the following questions: (2 marks)**

A) Is water pollution always visible? Justify your answer.

.....

B) How do the petroleum companies contribute to water pollution?

.....

**3) Listen and Complete the following table: (2 marks)**

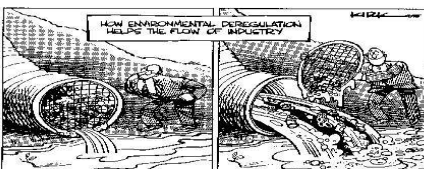
| Cause                                  | Effect                                    |
|--|---|
| Microscopic organisms and fertilizers. | .....                                     |
| .....                                  | The death of many plants and sea animals. |

**4) Complete the paragraph with words from the listening passage.(2marks)**

Wastewater from ..... contains harmful ..... that can be poisonous to marine life. This wastewater is also very ....., and when it is pumped into waterways, it has the ..... of heating up the temperature of the water.

**5) Circle the word with the different sound ( 1 mark)**

chemicals / beaches / which





## II. Language (...../12 marks)

### 1- Fill in the blanks with words from the box (3.5marks)

harmful / garbage / which / affected / smog / polluted / protect / sickness / for

Doesn't it bother you when you observe a magnificent panoramic view of a city only to see the ..... hovering over it. Or when you drive down a picturesque country road and have to endure the sight of the ..... at the side of the road. These are only a few examples of how our environment is becoming terribly.....

Dangerous pollutants live in the air we breathe, the water we drink and the land we live on. All living things are .....by these pollutants and simply digesting them is making us ill and diseased. Unfortunately, there are many industries and individuals responsible ..... releasing these ..... pollutants into our environment, and although, it may seem there is little an average person can do to help ..... our environment.



### 2- Circle the correct alternatives :( 3marks)

For humans to live a good life, we destroy nature. Logging (**who-what-which**) is the continuous cutting of trees, is a great threat that (**protects- ruins- saves**) rainforests. (**However- Because of- As a result**) the places where animals live are getting fewer and fewer. Therefore, many endangered species become without habitats and (**must- may- should**) disappear. Also, the illegal (**care- hunting - protection**) of some rare animals damages the biodiversity in rainforests. That's why (**offenders-smokers- farmers**) should



be punished severely.

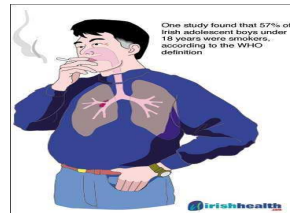
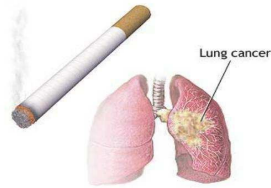




### 3- Put the words in the right tense or form. (3.5marks)

Smoking has become very common and fashionable, especially among young boys. This habit usually **(begin)**..... at school when boys try to experiment with every new thing that they can lay their hands on. Despite the **(warn)**..... given by doctors about the **(harm)** .....effects of smoking, people continue to smoke. Smokers are **(addiction)**..... to it, and even if they want to, they cannot refrain from picking up a cigar or cigarette and puffing away.

In the beginning, a teenager may **(take)**..... a few puffs from his friend's cigarette; then comes a time when it becomes an indispensable part of his life. Several puffs lead to the formation of a habit. Soon smoking begins to **(effect)**..... the health of the smoker. He becomes a chain-smoker. This smoke is **(toxins)**..... and the nicotine in the cigarette is known to cause cancer. It is ironic that despite the fact that every smoker is aware of the ill effects of smoking, he doesn't give it up.



### 4) Match each sentence part in A with its completion in B to get a coherent paragraph. (2marks)

| A                                     | B                             | Answers |
|---------------------------------------|-------------------------------|---------|
| 1/ Pollution is a major environmental | a) the creatures on earth.    | 1+..... |
| 2/ It endangers all                   | b) risk to health.            | 2+..... |
| 3/ In fact, Man is the one            | c) who can be blamed          | 3+..... |
| 4/ He is the cause of air, land       | d) offenders                  | 4+..... |
|                                       | e) noise and water pollution. |         |

# "If it is not far, don't go by car"

Good work.

